



# The International Culture of Care Network

RSPCA meeting: Focus on severe suffering - refining severe disease models and procedures

Karolinska Institutet 24-25 August 2022

Thomas Bertelsen

25 August 2022

# Why should you work with Culture of Care?

- Culture is a strong enabler



- Do things right – and do the right things



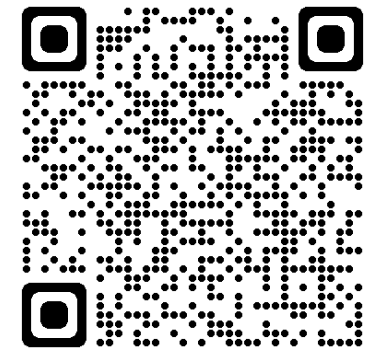
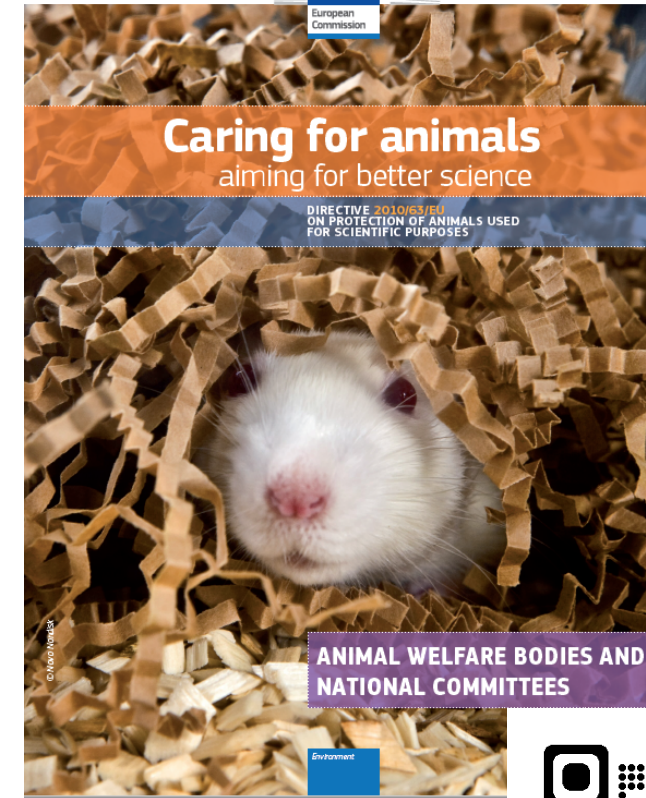
# The legal requirement for a Culture of Care in EU

- DIRECTIVE 2010/63/EU on the protection of animals used for scientific purposes
  - The word 'care' is mentioned 36 times in the Directive.
  - Recital 31:
    - Animal-welfare considerations should be given the highest priority

The [animal-welfare] body should ..... **foster a climate of care** .....

..... in relation to the principles of replacement, reduction and refinement, in order to enhance the life-time experience of the animals.

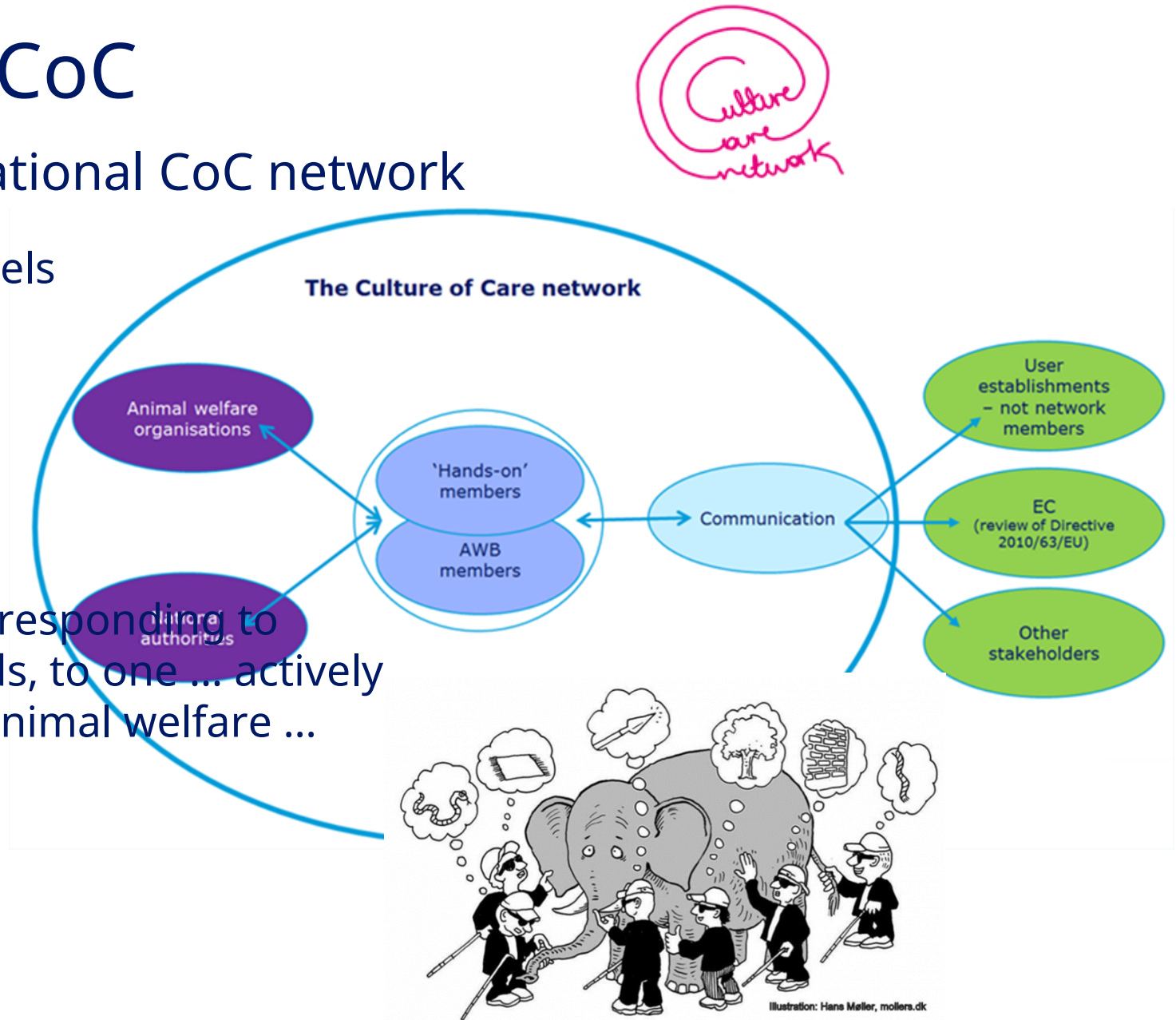
- There is no mentioning in the articles of the Directive
- Legislation ➡ SOPs etc: is about doing things right
- Performance (focus on outcome): is about doing the right things



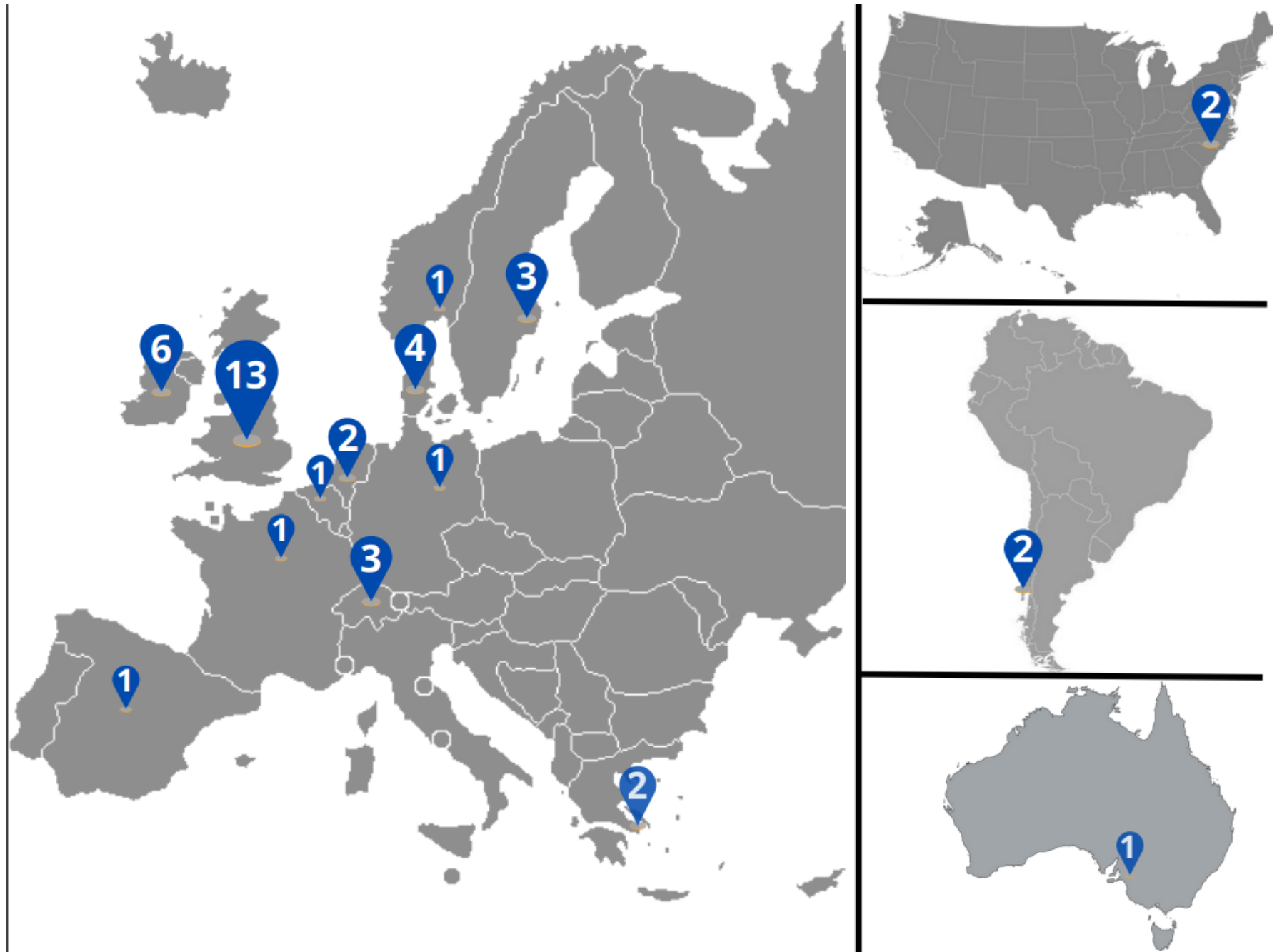
# How to work with CoC

– one example: the International CoC network

- The start – FELASA 2016, Brussels
- Composition
- Working principles
  - ... a shift away from merely responding to externally imposed standards, to one ... actively committed to improving ... animal welfare ...



**43 members**  
**15 countries**



# Culture of Care network material at the Norecopa website



This section explains what is meant by a Culture of Care, and why it is important.  
It is also the website of the International Culture of Care Network: [norecopa.no/CoC](https://norecopa.no/CoC)

## Short cuts:

- > [A Quick Start Guide](#) on how to encourage a Culture of Care
- > [A practical guide for animal care staff](#) [↗](#)
- > [Resources produced by Network members and others](#)

## Frequently Asked Questions:

### 1. What is a Culture of Care?

The term *Culture of Care* is used in the laboratory animal community to indicate **a commitment to**



# Culture of Care – and severe suffering

- Culture of Care is about going beyond and above compliance with minimum legal requirements
  - *“Simply having animal facilities and resources which meet the requirements of the legislation will not ensure that appropriate animal welfare, care and use practices will automatically follow”.*
- Culture of Care is a way to demonstrate that you are living up to the ‘contract’ with the general public on a humane and responsible use of laboratory animals
- Culture is an extremely strong enabler of **DOING THE RIGHT THINGS**
  - Compliance is about **doing things right**
  - and you need both!

# Thank you for your attention

- [TSBT@novonordisk.com](mailto:TSBT@novonordisk.com)

